

# SHELDON WALL MOUNTED BENCH

## SBN308-600

**LANGLEY DESIGN**  
EXTERNAL FURNITURE SOLUTIONS

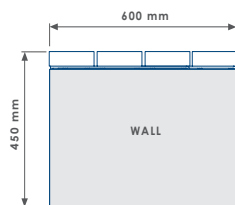
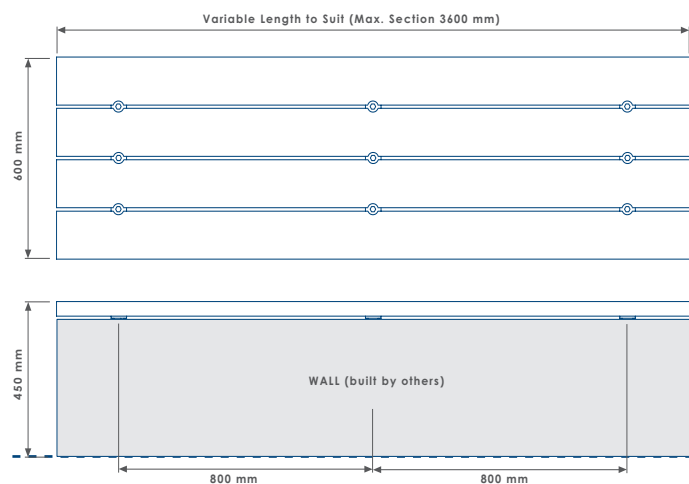


SBN308-600/WM/RP-BK/GL

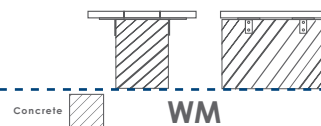


### NOTES

- Site Engineer to determine suitable fixing method.
- Fixing bolts by others - 12 mm dia. holes (use M10 bolts).
- Size of concrete foundation and concrete mix to be determined on site taking ground conditions into account.
- All products are made to order. This bench can be customized to have bespoke lengths and widths.
- Construction of wall is to be capable of taking bench load.
- Maximum section length on wall mounted benches is 3600mm.



### FIXING OPTIONS



FINISHED GRADE

Concrete

WM

### PRODUCT DIMENSIONS

LENGTH: Various    WIDTH: 450 mm    HEIGHT: 450 mm    WEIGHT: 35kg



### PRODUCT FINISHES

**FIXING OPTIONS:** Wall Mount (WM)

**SLAT MATERIALS:** Treated Redwood Class 3 (TRC3) - Treated Redwood Class 4 (TRC4) - Hardwood Iroko (HI) - Douglas Fir (DF) - Recycled Plastic (RP)

**METAL FINISHES:** Galvanised (GL) - Galvanised and Powder Coated (GPC) - Stainless Steel (SS)

REV1

Web: [www.langleydesign.co.uk](http://www.langleydesign.co.uk) Tel: 01793 759461 Email: [info@langleydesign.co.uk](mailto:info@langleydesign.co.uk)